

Gel Documentation Redefined

One system for GEL and WESTERN BLOT imaging, at a price point for individual labs

> Omega Lum™ SmartCapture Technology

Automatically capture the best image without the need to hassle with hardware or software

> 6 Megapixel CCD Camera

Highest resolution available for a gel documentation system

> 16 bit depth, deeply cooled

Low noise, wide dynamic range for quantitative accuracy in chemiluminescent applications

> Integrated Tablet Computer

No additional computer cost

> 6 Position Motorized Filter Wheel

For ultimate flexibility in dye selection

> EPI Blue Light Illumination

Compatible with SYBR® Safe Dye Chemistry

> EPI and Trans White Light Illumination

For visible dyes

> Dual Wavelength UV Transilluminator

302 and 365 nm

> Compact Design

12.5" x 18" x 24", fits right on the benchtop

> Integrated Cabinet

No Installation Required: Just take out of box, plug in, and turn on



Ordering Information

PRODUCT NAME	DESCRIPTION	PART NUMBER
Omega Lum G Imaging System	6MP, 16 bit, scientific grade CCD camera, Peltier cooling, -35°C controlled, hands-free auto-focusing lens, 6 position motorized filter wheel, 302 & 365 nm transilluminator, Epi blue and Epi white lights, white light conversion screen, chemi tray, orange filter, tablet computer, capture software and 3 licenses of analysis software	81-12100-00
Thermal Printer	USB connected thermal printer	23-12021-00
Thermal Paper	High density paper, 4 rolls	26-12022-00
Clear Gel Tray (Small)	Small UV transmitting tray for gel handling. Dimensions: 19 X 17 cm	34-12018-00
Clear Gel Tray (Large)	Large UV transmitting tray for gel handling. Dimensions: 19 X 21.5 cm	34-12215-00

Our goal is quite simple: We are committed to developing the highest quality imaging systems in the world, and our vision is purely shaped by our customer's needs and feedback. We are committed to working with you so you can get superior images with the best, most personalized service possible.

For more information and to order, contact a specialist today!
415-247-8760, sales@gelcompany.com, www.gelcompany.com

Specifications

Camera	<ul style="list-style-type: none"> • 6MP for high resolution images • 16 bit scientific grade CCD camera for quantitative imaging • Peltier cooling, -35°C controlled for chemiluminescence imaging • USB connection for fast downloads • Fast refresh rate for live imaging • High quality images ideal for downstream analysis
Maximum sample size	Up to 22 cm x 28 cm
UV imaging area	20.5 cm x 25 cm
Cabinet	<ul style="list-style-type: none"> • 302 & 365 nm pull out UV transilluminator • EPI white LEDs • EPI blue LEDs
Filter Wheel	6 Positions, motorized
Filters	Orange Filter (590 nm)
Applications	Chemiluminescent Western blots, fluorescent and visible gels, and SYBR® Safe dye imaging
Certifications	CE, cTUVus
Product Footprint	12.5" wide by 18" deep / 31.75 cm wide by 45.72 cm deep
Computer Requirements	Tablet Standard. Options for desktop available.

The Aplegen wordmark, the Aplegen logo, and Omega Lum are trademarks of Aplegen, Inc. Your unauthorized use or misuse of our copyrighted material or trademarks is expressly prohibited and may be in violation of copyright law, trademark law, and other laws, statutes and/or regulations. All other trademarks are the property of their respective owners.

OMEGA LUM™ G

Transforming How You Image Gels and Westerns



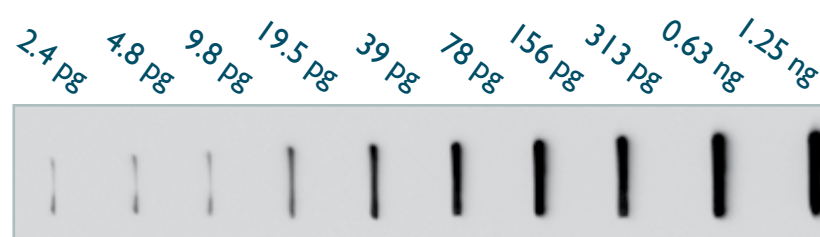
gel
company



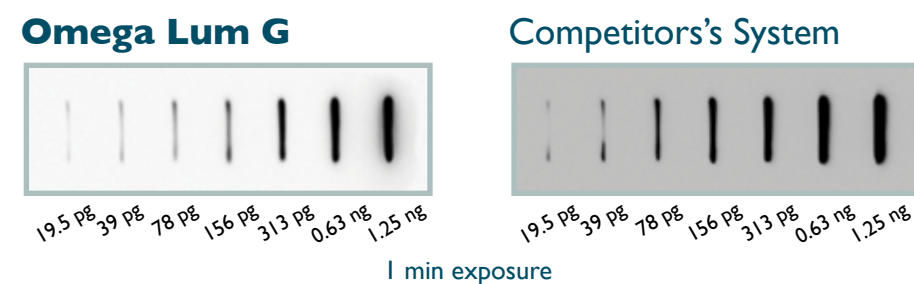
Experience Omega Lum G

Performance

The Omega Lum G delivers the performance you need for Western blot imaging.



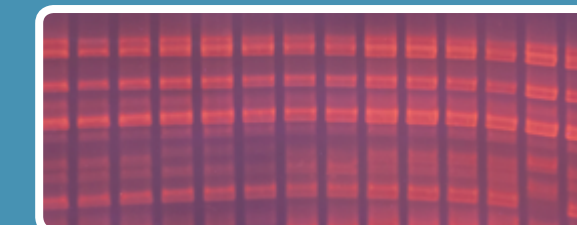
HRP-IgG conjugate 2-fold dilution series slot blot on a nitrocellulose membrane. Samples were incubated with chemiluminescent substrate and imaged on the Omega Lum G.



HRP-IgG conjugate 2-fold dilution series slot blot on a nitrocellulose membrane. Samples were incubated with chemiluminescent substrate and imaged on the Omega Lum G and a competitor's system.

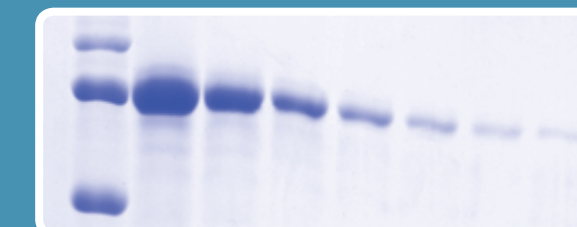
Applications

UV Imaging



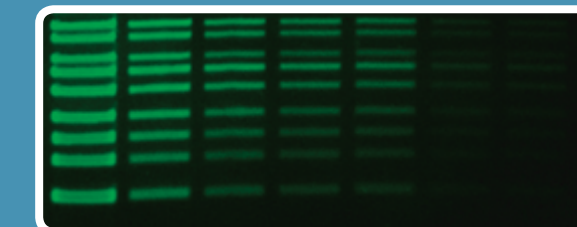
Ethidium Bromide

White Light Imaging



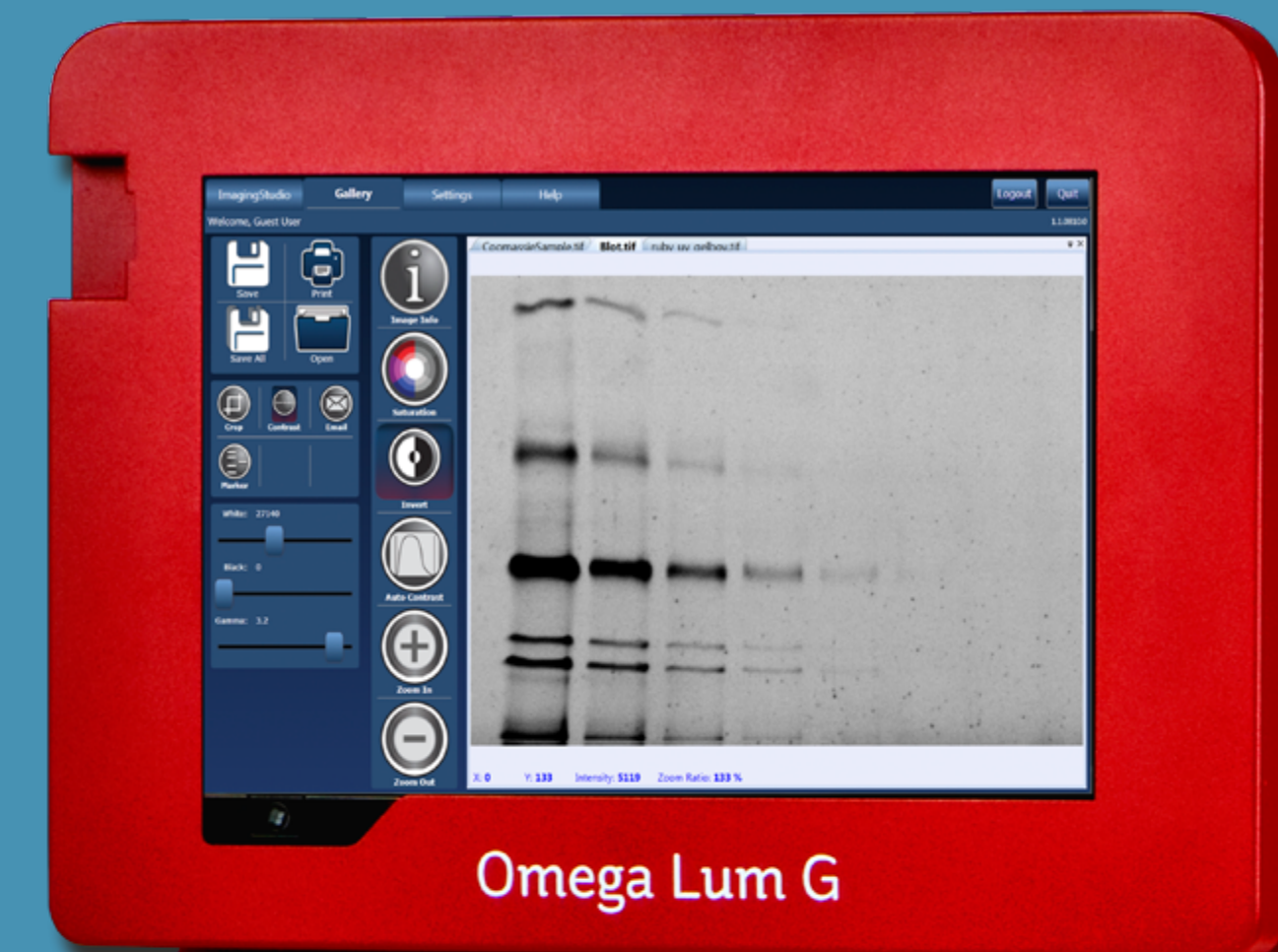
Coomassie Blue, Silver Stain

Blue Light Imaging



SYBR® Safe, SYBR® Gold, SYBR® Green

Chemi Imaging



Omega Lum G

> Transforming: User Experience

Imaging is simple: Log in to your custom profile, select your application, and press capture.

Omega Lum™ SmartCapture technology automatically focuses your sample without hassling with hardware or software. Our compact, integrated system comes standard with a tablet computer and fits easily on a bench top.

> Transforming: Expectations

Featuring a high-resolution, 6 megapixel, 16-bit camera with regulated cooling. Our 6 position filter wheel and dual wavelength UV transilluminator, Epi Blue and White lights, and white light conversion screen allow for a wide array of compatible dyes.

> Transforming: Your Lab

The Omega Lum G finally makes chemiluminescent imaging affordable for individual labs.

The Omega Lum G revolutionizes gel imaging by combining fluorescent gel and chemiluminescent imaging into one compact system, all for the price of a gel doc. This new system is redefining what you can expect from your lab's imaging system.